



Pānui 1: Hoe Tonga/TT41 Race

Saturday 18 October 2025

EVENT SUMMARY

This event is the third in the Hoe Tonga Winter series, to provide an opportunity for racing across the Hoe Tonga region. Tai Tonga 41 is proud to bring you the third race in the 2025 season!

We will be offering one race, with two distances: short race (9km), and long (16km). Each race will be open to all divisions (open, masters, senior masters, golden masters), craft type (W1, W2, W4, and W6) and genders (men, women and mixed).

We welcome you and your whānau to join us for this event.

EVENT SCHEDULE

8:30am	Registration open, waka drop off, safety checks
9.45am	Karakia and race briefing
10.00am	Race starts (may be staggered for different craft depending on entries)

RACE SCHEDULE

Time	Race
9.45am	Race Briefing
10.00am	Race Start

RACE RULES

- All entrants must be familiar with the Waka Ama New Zealand race and safety rules.
- Refer to the following link for more information: [Waka Ama NZ Race Rules](#)



AGE DIVISIONS & RACE EVENTS

WAKA	DISTANCE	DIVISIONS	GENDER
W1	9 km	Open, Master, Senior Master, Golden Master	Men, women
W2	9 km	Open, Master, Senior Master, Golden Master	Men, women & mixed
W4	9 km	Open, Master, Senior Master, Golden Master	Men, women & mixed
W6	9 km	Open, Master, Senior Master, Golden Master	Men, women & mixed

WAKA	DISTANCE	DIVISIONS	GENDER
W1	16 km	Open, Master, Senior Master, Golden Master	Men, women
W2	16 km	Open, Master, Senior Master, Golden Master	Men, women & mixed
W4	16 km	Open, Master, Senior Master, Golden Master	Men, women & mixed
W6	16 km	Open, Master, Senior Master, Golden Master	Men, women & mixed

FEES

PER PERSON BY EVENT (charged for each event entered)

Event	Cost
Race	\$25.00 9km per person \$30.00 16km per person



ONLINE ENTRIES & PAYMENT

- Online entries are to be completed using the Waka Ama NZ online entry system.
- All entries to be completed through your club admin – contact your club admin to process your entry
- No entries on the day, no exceptions
- Entries close on **Tuesday 14 October 2025**
- Rosters close on **Wednesday 15 October 2025**, rosters must be completed by close date, no exceptions
- Once entered, payment can be made online to:
 - Tai Tonga 41
 - 38-9011-0013609-00
 - Use your club, team name and division as your reference

SAFETY REQUIREMENTS

- **All paddlers must be proficient paddlers, and be prepared for the conditions**
- All watercraft will have to pass a safety check before racing.
 - The water craft needs to be placed at 'waka parking' in the image below to be safety checked.
 - We suggest that you bring tires for your waka
- All waka must have the following safety equipment for their races:
 - PFD - Personal Floatation Device (per person)
 - Bailers
 - Flare or cellphone in waterproof case
 - Spare Paddle - 2 for a W6, 1 for W1/2
 - Spray Skirt (W6)
 - Tow Rope (W6)
 - Leg leash (for sit on top W1)
- All surf skis must have:
 - PFD
 - Leg leash
 - Warm clothes
- Launching
 - Launching is from the Evans Bay Boat Ramp.
 - The ramp is very slippery and can have glass/other rubbish on it. Please bring appropriate footwear.
- **We are sharing the ramp with the sail boats. Please do not leave your waka on the ramp before, after or between races. Please aim to keep to one side of the ramp.**



INDIVIDUAL & TEAM WAIVERS

- Individual and Team waivers must be completed by all paddlers/teams
- All paddlers U18 must have their waiver signed by their parent/guardian
- Waivers can be sent to ***taitonga41@gmail.com*** or handed in at the managers meeting on the day
- Individual & Team waivers can be found on our event page on the Waka Ama NZ website

REGISTRATION

- Pick up your race pack from Registration
- Get your waka/surf ski safety checked, and safety sheet signed off, including noting your race number (existing or new)
- Fill out your waiver form, and return to Registration to confirm your entry

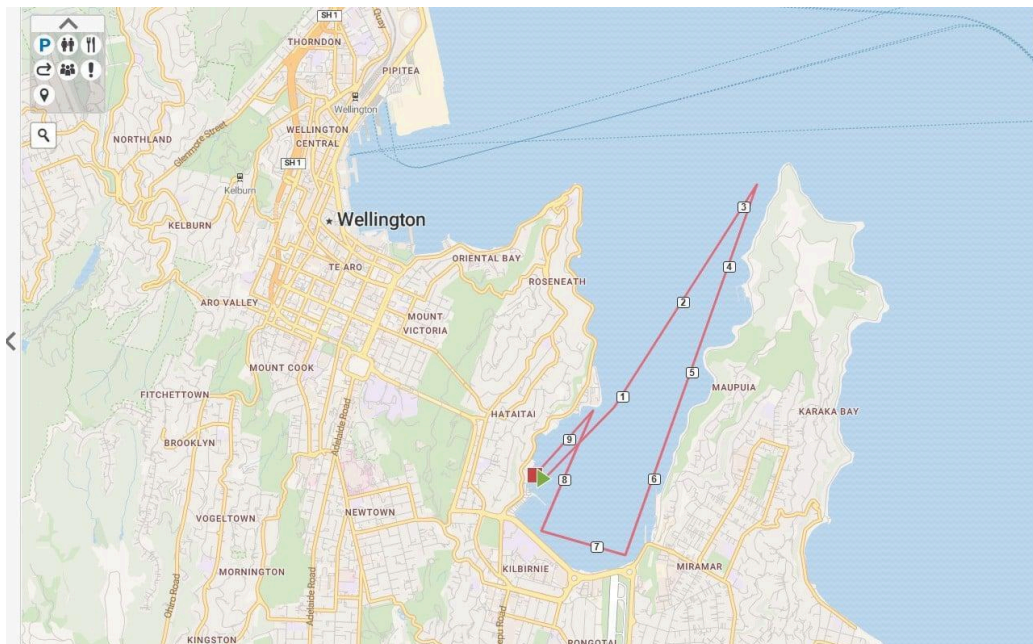
LOCATIONS

- Waka drop off will be available from 7.00am on the event day, with waka drop off and trailer parking will be as indicated on the plan below
- Car parking: Where possible, please park on the road. There is limited carparking as shown in purple below
- Toilets: At the Coastguard (Orange), the showers (white), or the club house (red)
- There is some limited carparking marked in purple

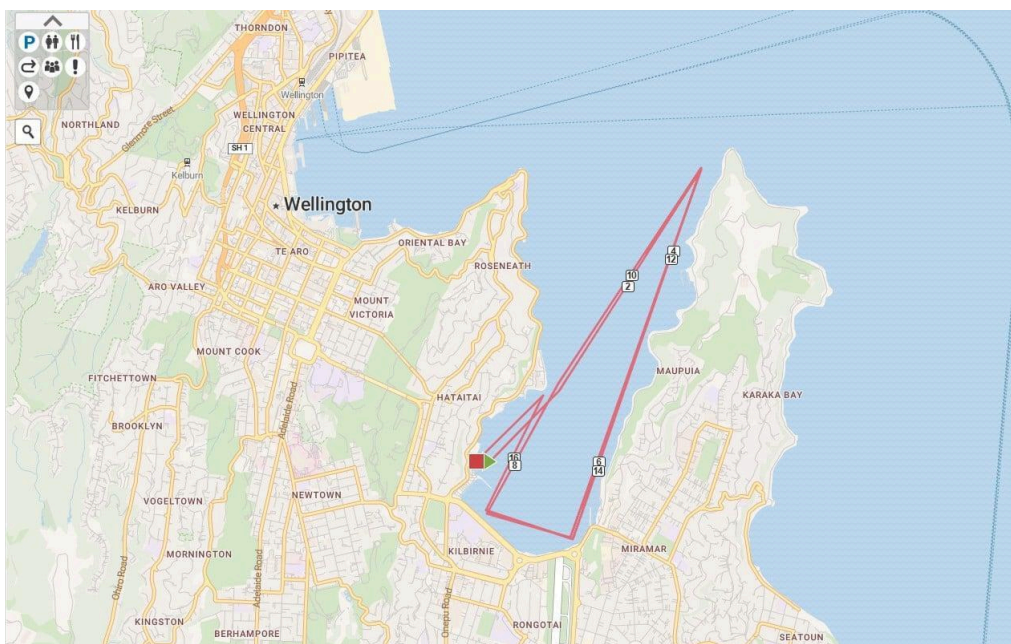


RACE COURSES

- **Short distance**



- **Long distance**



POST RACE

- After the race please join us at the Evans Bay Yacht and Motor Boat Club for kai!

CONTACT INFORMATION

- All enquiries please email: taitonga41@gmail.com
- All urgent matters please call: **027 310 1587**